

## Correction to Correlating Nanorod Structure with Experimentally Measured and Theoretically Predicted Surface Plasmon Resonance

[ACS Nano 2010, 4, 5453–5463. DOI: 10.1021/nn101493t]. Abrin L. Schmucker, Nadine Harris, Matthew J. Banholzer, Martin G. Blaber, Kyle D. Osberg, George C. Schatz,\* and Chad A. Mirkin\*

Page 5459. In our paper, Figure 8 should be replaced with the figure below to reflect corrected modified long wavelength approximation (MLWA) results. Correspondingly, on this page, in the first column of the third paragraph, the word “generally” should be replaced with “at times” in the following sentence: “The DDA, MLWA and quasistatic results in Figure 8 show the same trends but the DDA fwhm is generally larger than MLWA, and MLWA is always larger than quasistatic”. In addition, some corrections have been made to the Supporting Information.

*Supporting Information Available:* Highlighted corrections to the published supporting information. This material is available free of charge via the Internet at <http://pubs.acs.org>.

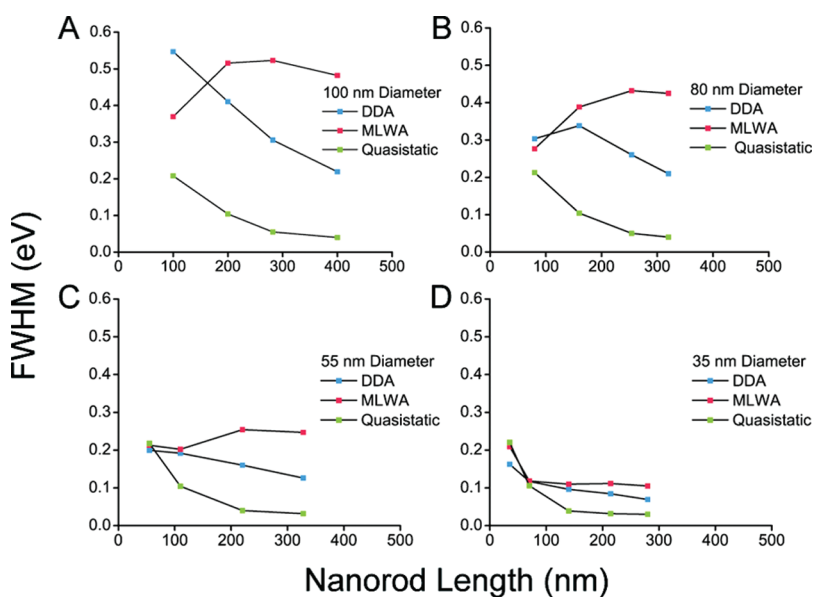


Figure 8. Full width at half-maximum values as a function of rod length for DDA, MLWA and quasistatic calculations for rod and spheroid diameters of: (A) 100 nm, (B) 80 nm, (C) 55 nm, and (D) 35 nm.

Published online August 17, 2011  
10.1021/nn2028659